

CRY2620G

**Drone-mounted Acoustic Imaging Camera
(V02.00.00.28)**

Release Note



01 Introduction

The CRY2626G is the world's first drone-mounted acoustic imaging camera for detection of pressurized system leaks and electrical partial discharge. The camera utilizes a microphone array with beamforming technology to pinpoint and acquire sound source distribution data and overlay it on a high-resolution video image.

The system features a 2-axis electric gimbal that allows pan and tilt control of the camera from the drone remote controller. This is beneficial for swiftly identifying potential gas leaks and partial discharge faults.

Featuring a robust and lightweight aluminum alloy body, the CRY2626G is designed to be durable under the most demanding environmental conditions. The included DJI SKYPORT allows for easy assembly and disassembly. Both photo and video modes are supported and data is stored on a large-capacity TF card for easy export of test results.

This document introduces the new features and improvements in the CRY2626G drone-mounted acoustic imaging camera V02.00.00.28.

For detailed operating instructions, please refer to the CRY2626G drone-mounted acoustic imaging camera.

This product is designed to assess partial discharge (PD) to provide early warning of risks.

However, due to potential environmental factors that may affect detection accuracy, the test results provided are approximate and for reference only.

02 New Features

V02.00.00.28

1. Optimize the picture delay to 200ms, making the picture smoother and clearer.

V02.00.00.17

1. Optimize camera image clarity.
2. Resolves the issue of occasional disconnection when taking photos/videos.

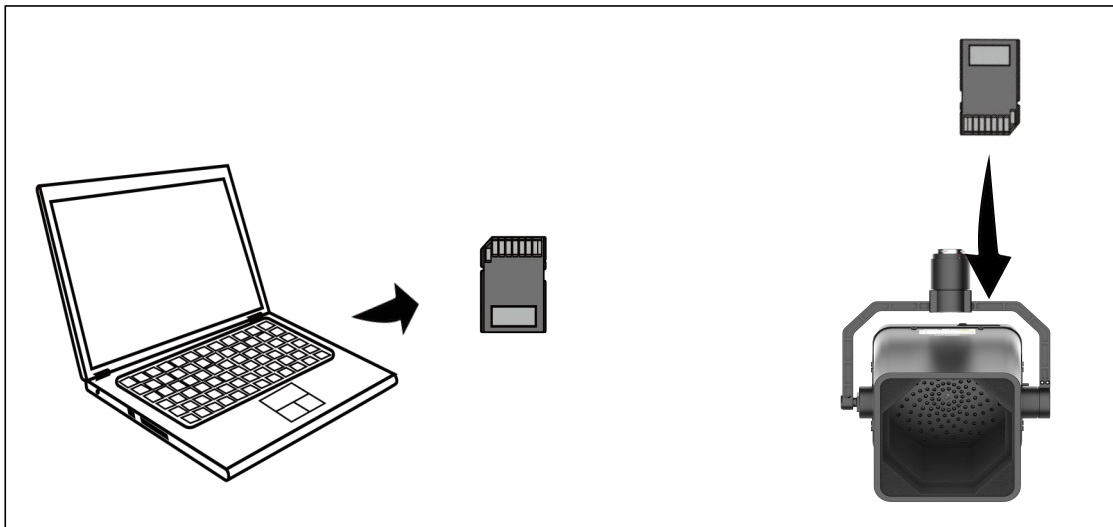
03 Update Guide

Step 1: Download the CRY2626G Firmware Installer.zip file to your computer and unzip it.

Step 2: Insert the CRY2626G's mini SD card into your computer using a card reader and open the root directory of the mini SD card.

Step 3: Place the unzipped "CRY2626G_V02.00.00.28.bin" file into the root directory of the mini SD card.

Step 4: Remove the mini SD card from your computer and install it into the CRY2626G.



Step 5: Power on the drone. The CRY2626G will detect the update package and automatically update to the updated version after 3 minutes.



Empowering 100+ industries through acoustic testing technology

make the world safer, greener and more efficient!